



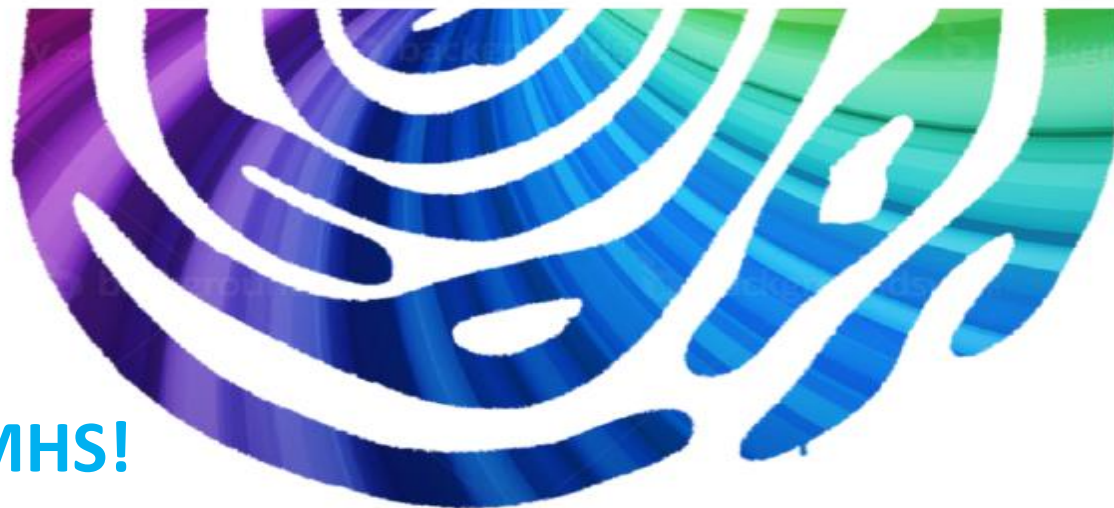
**I AM AN
ALLY**



I AM NOT GAY, BI,
TRANSGENDER,
PANSEXUAL, INTERSEX
OR ASEXUAL...



...I JUST SUPPORT THE
CRAZY IDEA THAT
EVERYONE SHOULD
HAVE EQUAL RIGHTS



Happy Pride Week, MHS!



MARPLE HALL SCHOOL

What does LGBT+ stand for?

L

Lesbian

G

Gay

B

Bisexual

T

Transgender

+

Questioning
Asexual
Binary
+ More!

B

Bisexual

A person who is not exclusively attracted to people of one particular gender.

Famous people that identify as bisexual:

Evan Rachel Wood

Alan Cumming

Lady Gaga

Megan Fox

Cara Delevigne



T

Transgender

A person who emotionally and psychologically feels that they belong to the opposite sex...

Famous people that identify as trans:

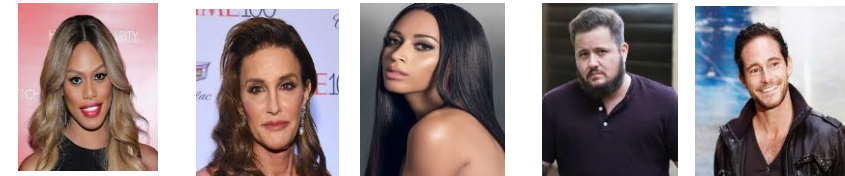
Chaz Bono

Isis King

Caitlyn Jenner

Laverne Fox

Balian Buschbaum



Key terms we are going to introduce in today's session...



Trans -used to describe someone who feels that they are not the same gender as the physical body they was born with, or who does not fit easily into being either a male or a female.

Transitioning – adopt permanently the outward or physical characteristics of the gender one identifies with, as opposed to those associated with one's birth sex.

Gender - the state of being male or female socially or culturally.

Sex - the state of being male or female biologically.

Why is it important we learn about Sex, Gender and Trans identity?



What do you think?
Why is it important?

Why is it important we learn about Sex, Gender and Trans identity?

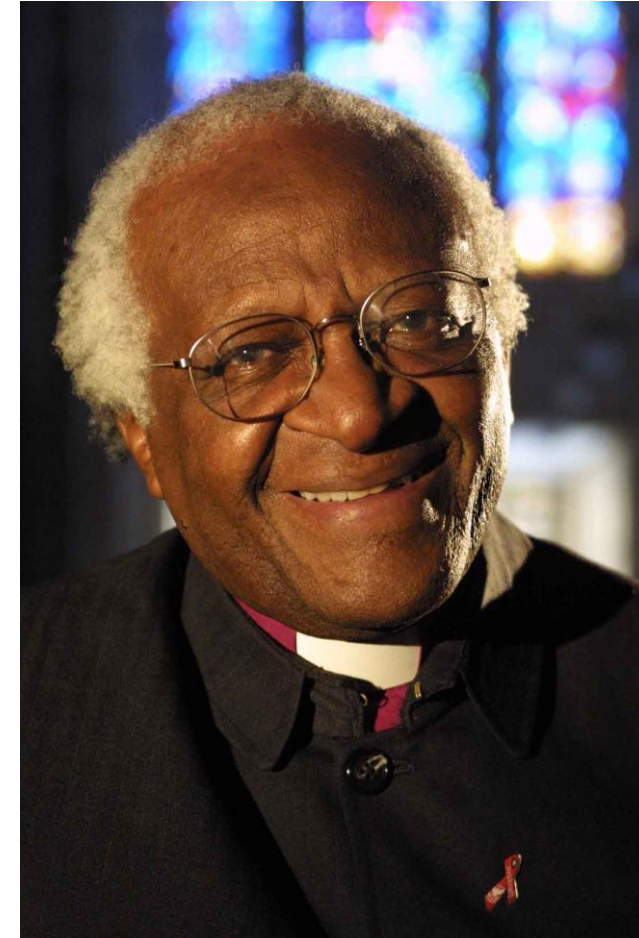


- To be more accepting and understanding of other peoples differences and qualities.
- For it not to be a taboo subject.
- To offer support to anyone that is having a difficult time.
- To allow others to express themselves freely and safely.
- For people to live their authentic self and to live without any judgement or prejudice in what sometimes can be considered a hostile world.

Archbishop Desmond Tutu

“I cannot keep quiet while people are being penalized for something about which they can do nothing - their sexuality.

To discriminate against our sisters and brothers who are lesbian or gay on grounds of their sexual orientation or gender for me is as totally unacceptable and unjust as apartheid ever was.”



Meet Tom...



Tom is transitioning. He used to use the female toilets at school, but since establishing himself as male, has decided to enter the boys toilets for the first time.

Just as he enters, two older boys inside shout, 'what are you doing in here? Get out, you freak!'

This took a lot a lot of courage for Tom and now he feels scared.

Discussion time...



-What does transitioning mean and what is a trans person? Why did the boys think they could shout at Tom like this?

-What could the school have done / should it do now to support Tom? What would you do as his friend?

- Should public toilets be gendered? Why / why not? Explain using clear examples to back up your ideas.



Meet Jamie

- Watch the video about Jamie.
- Jamie is a FTM person- this means they are transitioning from Female to Male.
- After the video, discuss one of the questions with your class and teacher.

<https://www.youtube.com/watch?v=zaEYAQ5c8uE>

Discussion- Y7



- What does Jamie have to do full time before he can start transitioning?
- What is the chemical hormone that Jamie begins to take?
- What are the less pleasant side effects of taking this hormone?
- Name three new effects Jamie is pleased about.....

Discussion- Y8



- What effects does Jamie experience two months and three months on from starting to transition?
- How does Jamie disguise the fact he was born with breasts?
- Describe the changes in Jamie, 3 weeks post-op.
- At what point is Jamie male? Is it gradual, or is there a definite point?

Discussion- Y9/10



- How would you describe Jamie after three years. Would you say the transitioning had been successful?
- What impact will the transitioning have on Jamie's mental health?
- Anyone can transition to another gender. What does this tell us about gender and our own identities?

Recap...

Can you match up the key term with the definition?

Trans

Transition

Gender

Sex

the state of being male or female biologically.

adopt permanently the outward or physical characteristics of the gender one identifies with, as opposed to those associated with one's birth sex.

used to describe someone who feels that they are not the same gender as the physical body they was born with, or who does not fit easily into being either a male or a female.

the state of being male or female socially or culturally.

ANSWER BOX – BEHIND HERE





What to do if...

Research has shown that bullying (LGBT+ bullying in particular) can have harmful effect on the individual. Most of this bullying is due to young people being stigmatised.

If you see someone being bullied...

- 1. Don't keep quiet-** tell a teacher no matter how silly it seems.
2. Report **every incident**.
- 3. Support the person** being bullied.
4. If you are worried about someone tell your tutor. They are there to help and will never reveal your name or what you have said unless it is a criminal or safeguarding matter.



Consequences

- If any student demonstrates or uses homo/transphobic, racist or disablist attitudes/language they will be placed in IE to carry out reflective activities.
- Parents will be informed.
- A member of staff will also come and have a chat with you about your choice of language and the offense it can cause.

MHS **does not accept any form** of discrimination!

Help & Advice



If you or anyone you know is being bullied let them know of services that there are services available to help them.

- Child Line - 0800 11 11
- Young Minds - www.youngminds.org.uk
- Stonewall - 0800 050 20 20
- Beat Bullying Cyber Mentors: www.cybermentors.org.uk
- CEOP – www.ceop.police.uk
- Teachers/HOY/PM
- Youth Workers



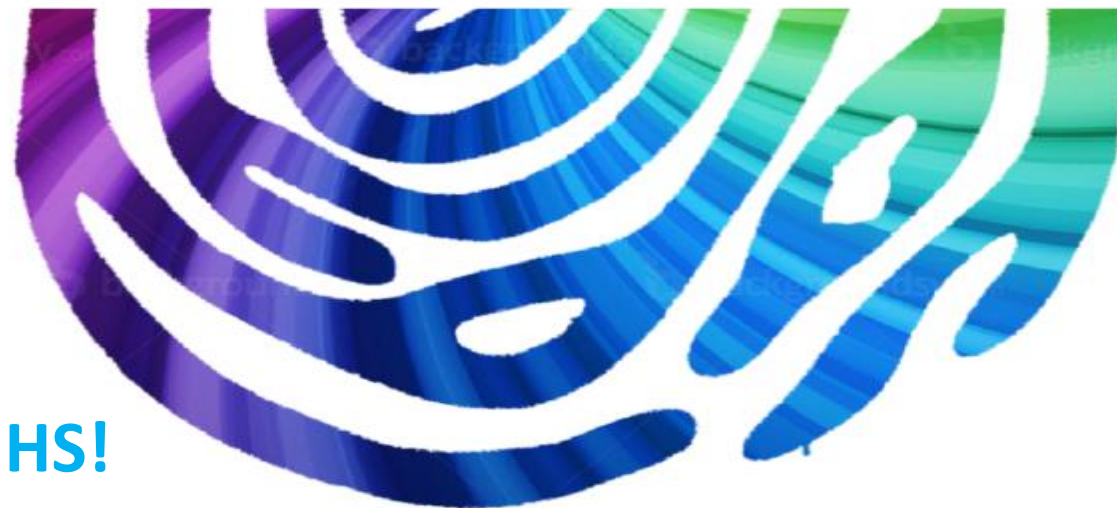
**I AM AN
ALLY**



I AM NOT GAY, BI,
TRANSGENDER,
PANSEXUAL, INTERSEX
OR ASEXUAL...




...I JUST SUPPORT THE
CRAZY IDEA THAT
EVERYONE SHOULD
HAVE EQUAL RIGHTS



Happy Pride week MHS!



MARPLE HALL SCHOOL



LGBT + Quiz

[Click to start](#)

Question 1

What does the 'B' stand for in LGBTQAI+?



Betasexual



Boring



Bisexual



Bigot



Wrong Answer!

C. Bisexual



Try Again

Question 2

When were civil partnerships introduced in the UK?



A

2004

B

2013

C

1994

D

1980

Wrong Answer!

A. 2004



Try Again

Question 3

What is the symbol of the LGBT movement?



A heart



A unicorn



A dove



A rainbow

Wrong Answer!

D. A rainbow



Try Again

Question 4

This is the flag for which group of people?



Bisexuals



Lesbians



Asexuals



Intersex

Wrong Answer!

C. Asexuals



Try Again

Question 5

What did the word 'lesbian' originally mean?



Someone from Lesbos



Someone whose surname was Lesley



French for 'the good people'



A lover of the theatre



Wrong Answer!

A. Someone from Lesbos (a Greek island).



Try Again

Question 6

Who is this famous lesbian
TV personality?



Ellen
Degenerous



Ellen Dangerous



Ellen
Degenerate



Ellen
Degeneres

Wrong Answer!

D. Ellen Degeneres



Try Again

Question 7

What is the name of Dr Who's first gay companion?



A

Ben Potts

B

Bill Potts

C

Phil Potts

D

Pol Potts

Wrong Answer!

B. Bill Potts



Try Again

Question 8

Who is the top selling gay singer/songwriter in the world?



A

Will Young

B

George Michael

C

Elton John

D

Freddie
Mercury

Wrong Answer!

C. Elton John



Try Again

Question 9

The symbol of which famous global brand is a tribute to gay mathematician Alan Turing?



Coca Cola



McDonald's



Nike



Apple

Wrong Answer!

D. Apple



Try Again

Question 10

Which one of the following celebrities is NOT bisexual?



Lady Gaga



Mary Berry



Angelina Jolie



Kristen
Stewart

Wrong Answer!

B. Mary Berry



Try Again

Question 11

American drag queen RuPaul has hosted a very successful reality TV show since 2009. What is it called?



RuPaul's
Dragons



RuPaul's Wagon
Race



RuPaul's Drag
Race



RuPaul's Wagon
Wheels

Wrong Answer!

C. RuPaul's Drag Race



Try Again

Question 12

When was homosexuality between men decriminalised in the UK?



A

1967

B

1942

C

1994

D

1980

Wrong Answer!

A. 1967



Try Again

Question 13

Laverne Cox is a transgender actress famous for her role as Sophia Burset in which US drama series?



Oranges Are
Not The Only
Fruit



Oranges and
Lemons



Orange County



Orange Is The
New Black

Wrong Answer!

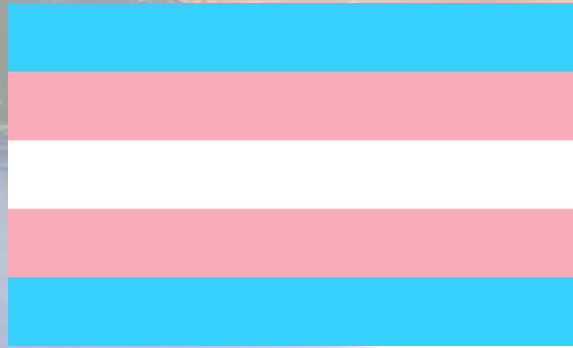
D. Orange Is The New Black



Try Again

Question 14

This is the flag for which group of people?



Bisexuals



Lesbians



Transgender



Intersex

Wrong Answer!

C. Transgender



Try Again

Question 15

When homosexuality was still a crime in the UK, gay men used to speak to each other in a special secret language. What was it called?



Polari



Polaroid



Polar Bear



Bipolar

Wrong Answer!

A. Polari



Try Again

Question 16

In how many countries is homosexuality
still illegal today?



0



13



37



74

Wrong Answer!

D. 74. Homosexuality is punishable by death in 13 of these countries.



Try Again

Question 17

When did homophobic hate crime become a criminal offense in the UK?



1983



2003



2013



1993

Wrong Answer!

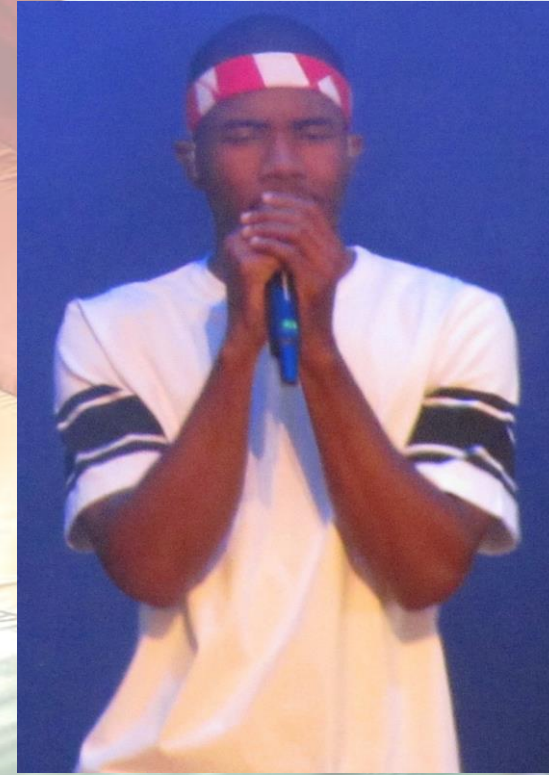
B. 2003



Try Again

Question 18

Frank Ocean is an award-winning gay singer-songwriter. What was his name at birth?



Christopher
Marlowe Allen



Christopher
Cotterill Boyce



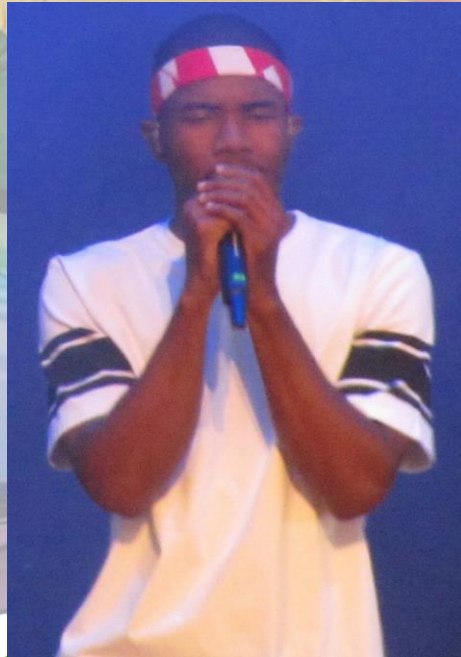
Christopher
Edwin Breaux



Christopher
Edgar Eau

Wrong Answer!

C. Christopher Edwin Breaux



Try Again

Question 19

According to a recent study in the US, which group of people have the highest average salary?



A

Straight women

B

Gay women

C

Straight men

D

Gay men

Wrong Answer!

D. Gay men



Try Again

Question 20

According to LGBT rights charity Stonewall, what percentage of the UK population is estimated to be gay, lesbian or bisexual?



3%



6%



9%



12%

Wrong Answer!

B. 6%



Try Again

Congratulations!

**Correct
answer!**

