



Marple Hall School

Policy Document

Marple Hall School

Drugs and substance Policy

Staff responsible for policy: Claire Gregory

Date reviewed: April 2019

Date approved by Governors:

Signed by Chair of Committee:

Signed by Headteacher:

Date for next review: Summer 2021

MHS School Drugs and Substance Abuse Policy

And protocols agreed with Mosaic School Based Service

Statement of Policy

The School condones neither the misuse of drugs or alcohol by members of the school nor the illegal supply of these substances.

The School is committed to the health and safety of its members and will take action to safeguard their well being.

The School acknowledges the importance of its pastoral role in the welfare of young people, and through the general ethos of the school, will seek to persuade students in need of support to come forward.

Policy Aims

We believe and support the following educational aims in respect of substance use and misuse.

- ◆ To provide accurate information about substances
- ◆ To increase understanding about the implications and possible consequences of use and misuse
- ◆ To encourage an understanding for those experiencing or likely to experience substance use
- ◆ To widen understanding about related health and social issues eg. Sex and sexuality, crime, HIV and AIDS
- ◆ To seek to minimise the risk that users and potential users face
- ◆ To enable young people to identify sources of appropriate personal support

How these aims will be fulfilled

There will be a coherent programme of drugs education throughout the school aimed at providing balanced information and opportunities to acquire the skills and attitudes required for effective decision making about drugs.

The education programme will include both formal and informal elements, and include where appropriate, outside agencies .

The education offered will aim to provide accurate information about substances and the implications of drug use. Where appropriate, students who do or might use drugs are offered information that will minimise their risks.

The school will aim through its general ethos and pastoral care programme, to persuade students in need of support to come forward and focus on preventative actions particularly for vulnerable students.

Support, education and guidance will also be offered to all staff of the school.

The Role of Outside Agencies

The School actively co-operates with other agencies such as the Police, Social Services, LA and Health and Drug Agencies ('MOSAIC team') to deliver its commitment to Drugs Education and to deal with incidents of substance use and misuse. We may also refer a student to MOSAIC should we suspect drug or substance abuse.

The Headteacher takes overall responsibility for the policy and its implementation. Liaison with the Governing Body, parents, LA and appropriate outside agencies will be the responsibility of a nominated member of staff, who will have general responsibility for handling the daily implementation of this policy and ensuring that all staff dealing with substance abuse issues are adequately supported and trained.

Review and Evaluation

The policy will be reviewed and evaluated to identify whether or not the aims are being met. The first review should be completed twelve months after the school ratifies the policy. Throughout the policy the term “substance” refers to any drug or psychoactive substance both legal and illegal or alcohol.

In instances involving substance misuse or supply on the premises:

Parents will be informed at the earliest opportunity by the Headteacher or nominated member of staff. The School and the parents can then work together to support the young person involved. Should a child appear to be under the influence they should be removed immediately and parents called to come and collect their child.

If a young person admits to using or supplying substances off the premises the School will inform the parents.

There is no legal obligation to inform the police, though they may be able to give relevant support and advice. However, a school cannot knowingly allow its premises to be used for the production or supply of any controlled drug or the preparation or smoking of opium or cannabis. Where it is suspected that dangerous substances are being sold on the premises, details regarding those involved as well as much information as possible, will be passed to the Police Liaison Officer and the LA informed.

The School will consider each substance incident individually and recognises that a variety of responses will be necessary to deal with incidents. The School will consider very carefully the implications of any action it may take. It seeks to balance the interests of the students involved, the other school members and the local community. Permanent exclusion is seen as an appropriate response for supplying substances on school premises.

The Headteacher will take responsibility for liaison with the media. As the issue of substance misuse is an emotive one, and is likely to generate interest from the local and national media, the school will take appropriate advice and guidance from the LA Press Office and Legal department to ensure that any reporting of incidents remains in the best interests of the young people, their families and the school. Where LA schools are concerned the LA should be informed as soon as possible.

Guidance for Staff

Where a young person discloses substance misuse on the premises, staff will inform the Head of Year Safeguarding Team and where appropriate, participate in the planning of subsequent action as described above. Where a young person discloses substance misuse off the premises, the staff member will use his or her discretion to decide on appropriate action, but will normally involve the Head of Year. Safeguarding Team

Where staff discover substances which are suspected to be harmful, illegal or deserving of investigation, they should note the two circumstances in which substances may be removed from either a place or a person

Place

Refer to Protocol 1

If possible, remove the substance from where it was discovered in the presence of a witness. If this is not possible, do not leave the substance there while you enlist the support of a colleague or student as a witness. Continue with the procedure below.

Person

Refer to Protocol 2 & 3

If contact with MOSAIC cannot be made then follow the procedure below:

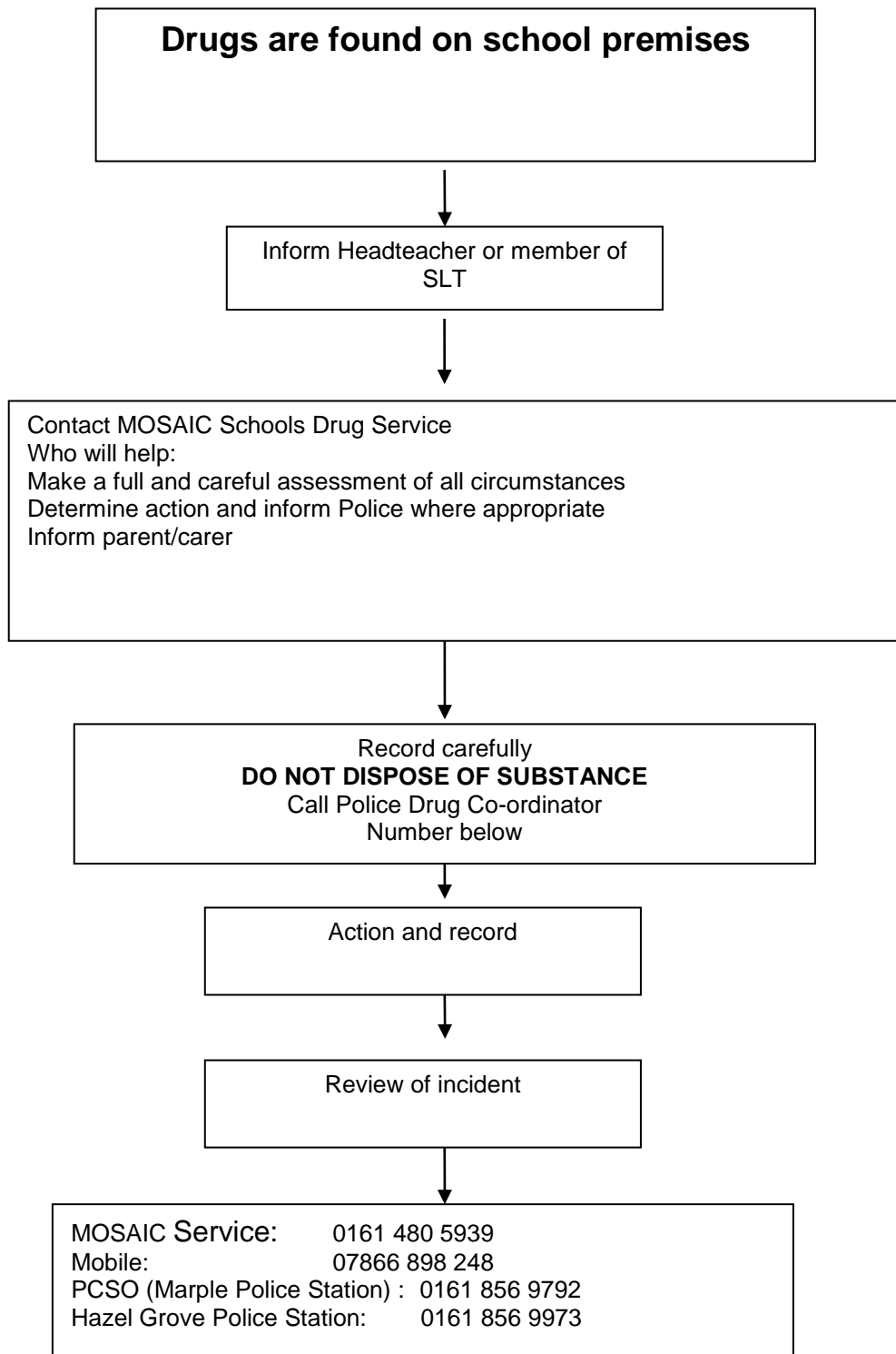
When receiving or retrieving substances from a student, do so, if possible in the presence of a witness. In the absence of a witness, do not put off receiving substances, or, within bounds of your professional discretion, removing a suspicious substance from a student's possession.

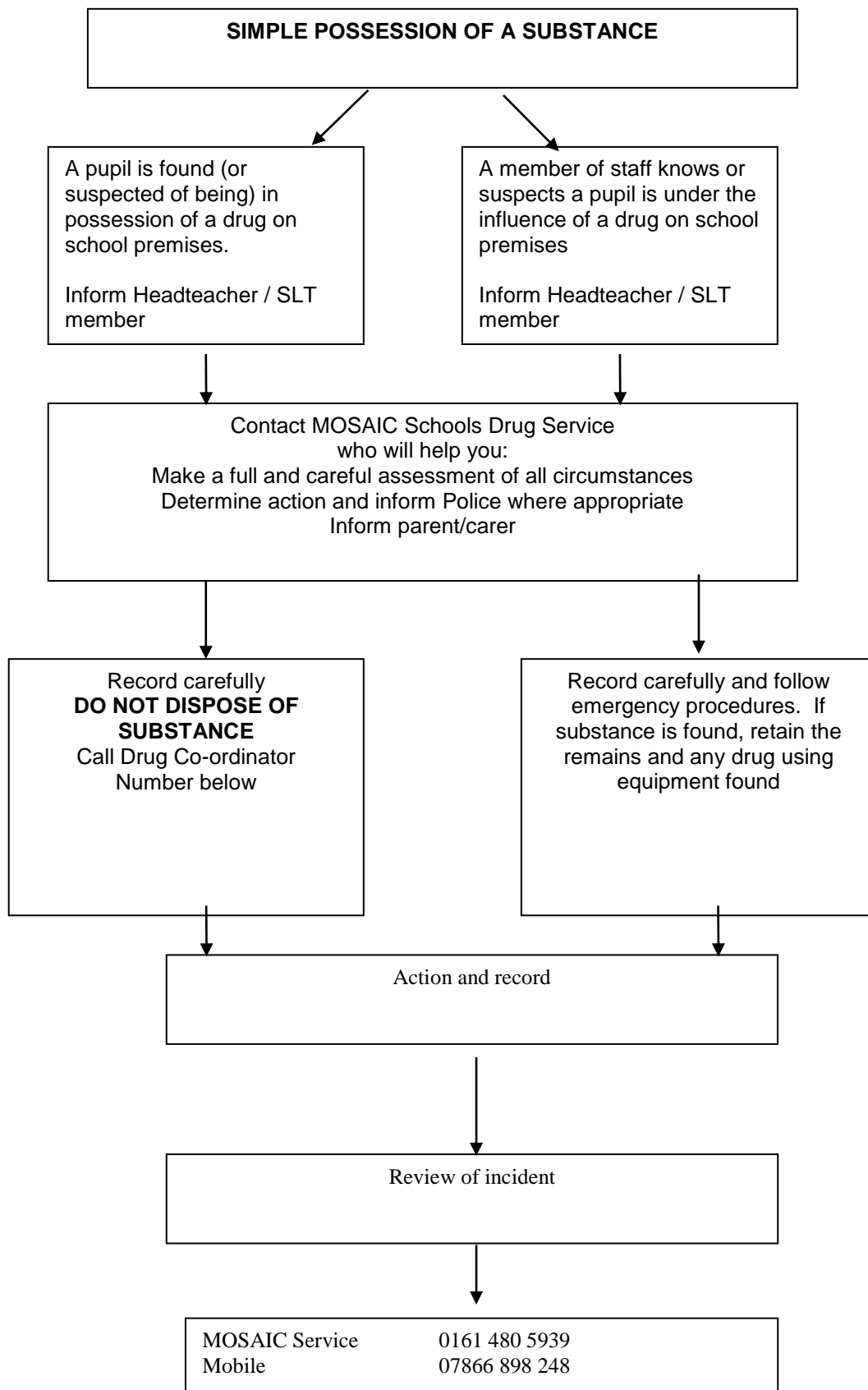
The following guidelines should be observed at all times:

1. Remove the substance and record the time, place and circumstance when the substance came into your possession.
2. Do not investigate the nature of the substance, but do record its approximate size and appearance.
3. When possible, have the recordings countersigned by a witness.
4. Take the substance immediately to a member of SLT/ Headteacher, whoever is nearest. Do not keep the substance on your person or in a place of safe keeping; to do so may place you at risk.
5. In the presence of the member of SLT / Headteacher, place the substance in a suitable sealed container and sign and date the package. An official report must be completed, recording the time date and circumstance of the findings.
6. The Headteacher may choose to arrange for the Police to remove the substance from the premises or may choose to dispose of it in an appropriate way.
7. In the event of a discovery of any equipment associated with substance use, especially needles and syringes, students should not be allowed to handle such items. All equipment found must be handled by adults with utmost care. The Headteacher must ensure that materials are placed in a secure and rigid container to await collection by the appropriate service.

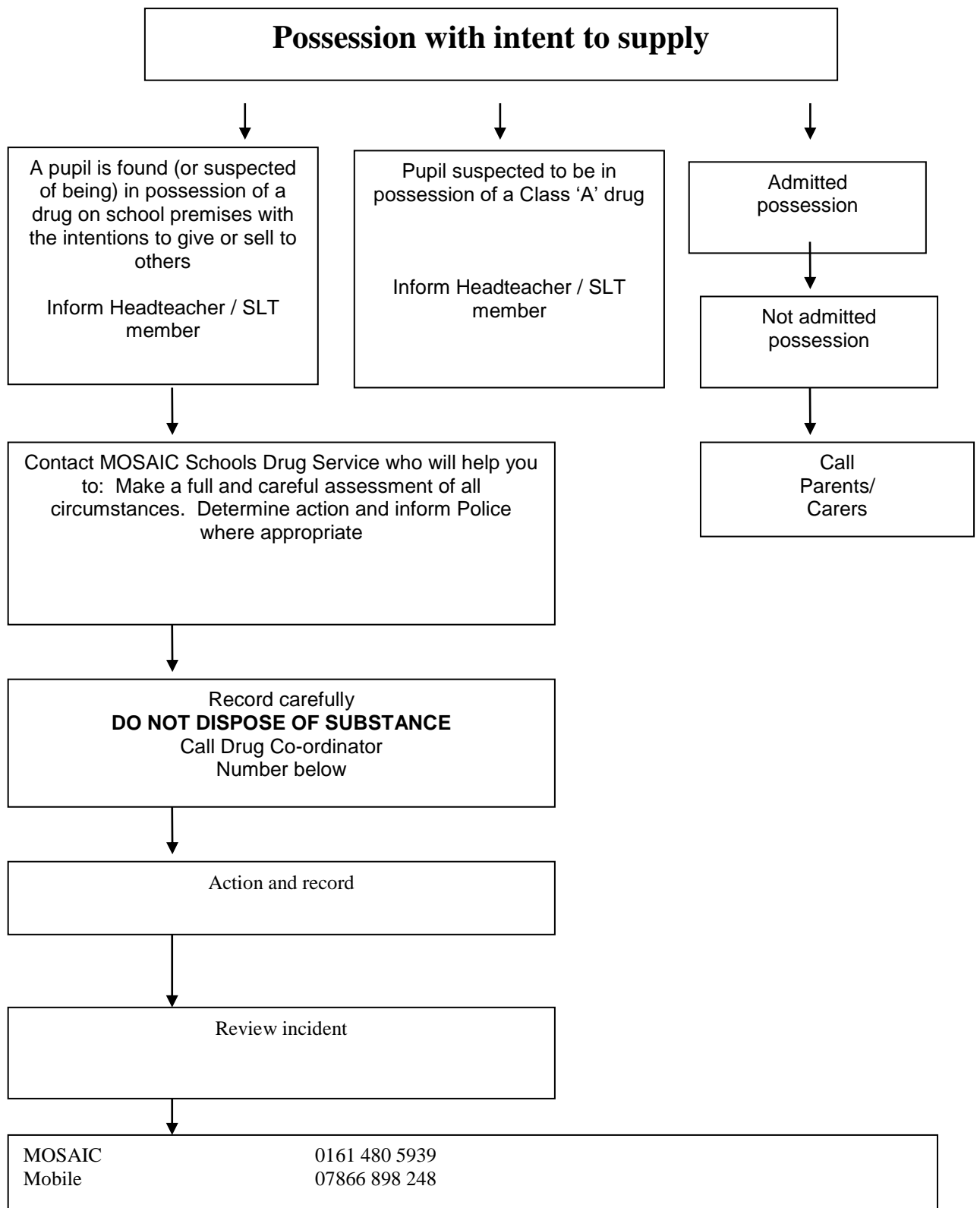
Protocol 1

Found Substance





PROTOCOL 3



Drug Situations – Medical Emergencies

N.B. IF IN DOUBT ALWAYS CALL MEDICAL HELP

The procedures for an emergency apply when a child or young person or others are at immediate risk of harm. A person who is unconscious, having trouble breathing, seriously confused or disorientated or who has taken a harmful toxic substance, should be responded to as an emergency.

Your main responsibility is for any pupil at immediate risk, but you also need to ensure the well-being and safety of others. Put into practice your school's first aid procedures.

ALWAYS:

- assess the situation
- if a medical emergency, send for medical help and ambulance

BEFORE ASSISTANCE ARRIVES:

If the person is conscious

- ask the person what has happened and to identify any drug used
- collect any drug sample and any vomit for medical analysis
- do not induce vomiting
- keep the person under observation, not with another pupil, warm and quiet

If the person is unconscious

- ensure that the person can breathe and place in recovery position if you are able to do so
- do not move the person if a fall is likely to have led to spinal or other serious injury which may not be obvious
- do not give anything by mouth
- do not attempt to make the person sit or stand
- do not leave the person unattended or in the charge of another pupil

WHEN MEDICAL HELP ARRIVES:

- Pass on any information available including vomit and any drug samples

Appendix A: Letter sent to all parents annually from Feb 2015

Dear Parents and Carers,

I am writing to you to raise awareness of an issue that can affect young people in every part of modern Britain. Alcohol and recreational drug use can cause significant problems for young people and have far reaching consequences for their adult lives. Students who misuse alcohol or drugs of any kind, including so called 'legal highs', run the risk of significantly damaging their health and harming their chances of gaining a good education.

In Stockport we believe that it is the duty of secondary schools to work with parents in educating young people as to the dangers of substance abuse, to assist them in making healthy lifestyle choices and to offer support where young people encounter difficulties as a result of these choices. Schools aim to work closely with parents, agencies and the police to ensure that students are fully informed of the issues around substance use. All secondary schools tackle the issues of drug and alcohol use through an educational programme and offer support for parents with up to date information about drugs and drug use.

If any young person in school is thought to be vulnerable or known to be using substances they will be offered support from agencies such as MOSAIC (Stockport Young Peoples Drug and Alcohol Service). MOSAIC also offer support for parents who may be concerned about their child's substance use.

All Stockport headteachers are very clear there is no place for drug or alcohol use in a school setting. As laid out in individual schools' Drug and Alcohol policies any student found in possession of drugs or alcohol or engaged in supplying drugs or alcohol will be punished severely and may face permanent exclusion from their school.

Both I and the Headteachers of secondary schools across Stockport are committed to enabling all students to study in a school environment entirely free of recreational drugs and the misuse of alcohol.

Yours faithfully,

J Barker
Headteacher
Marple Hall School

